



# Collaborating to Improve Children's Behavioral Health: A Comprehensive Playbook to Fostering Healthy Behavioral Health in Children



# TOPIC EXPERTS



**Uma Ahluwalia,  
MSW, MHA**  
*Managing Principal  
HMA  
Washington, DC*



**Julie Collins,  
MSW, LCSW**  
*Vice President,  
Practice Excellence  
CWLA*



**David Miller,  
M.P.Aff.**  
*Senior Policy  
Associate  
NASMHPD*



**Sheila Poole**  
*Vice President,  
External Relations  
APHSA*



**Joe Ribsam, JD**  
*Child welfare and  
Juvenile Justice  
Policy Director  
AECF*



**Caitlin Thomas-  
Henkel, MSW**  
*Principal  
HMA  
Philadelphia*

To learn more about our speakers and their organizations, please visit this [link](#).

# TODAY'S AGENDA AND LEARNING OBJECTIVES

- Discuss the need to develop a collaborative multi-system response to meet the behavioral health needs of children, youth and their families
- Discuss the Policy Lab opportunity for 8 state child serving agency teams to participate in the children's behavioral health policy lab
- Q & A Discussion

# CROSS SYSTEM CHALLENGES

Lack of data sharing

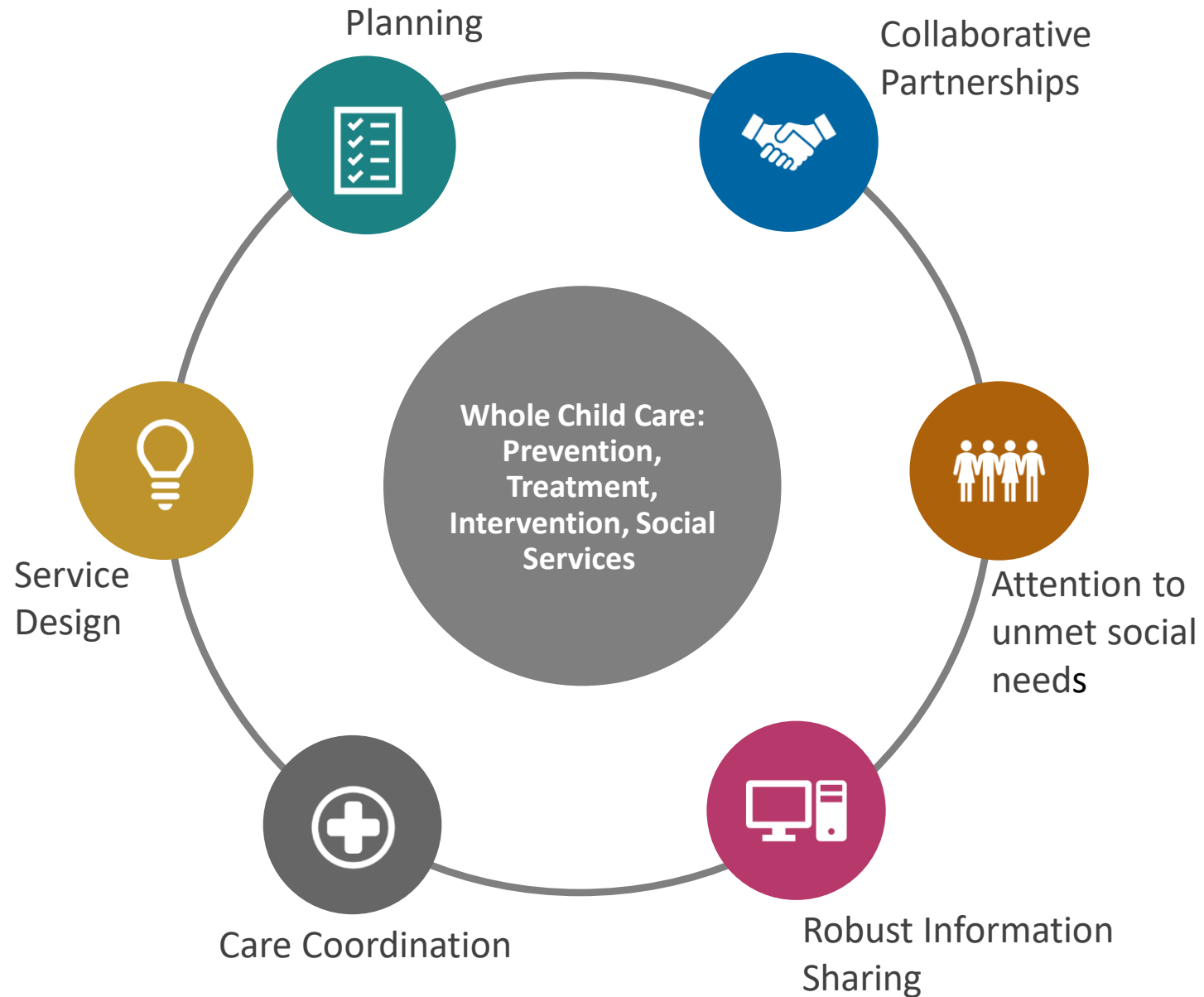
Barriers to developing integrated and interoperable systems

Separate regulatory and policies

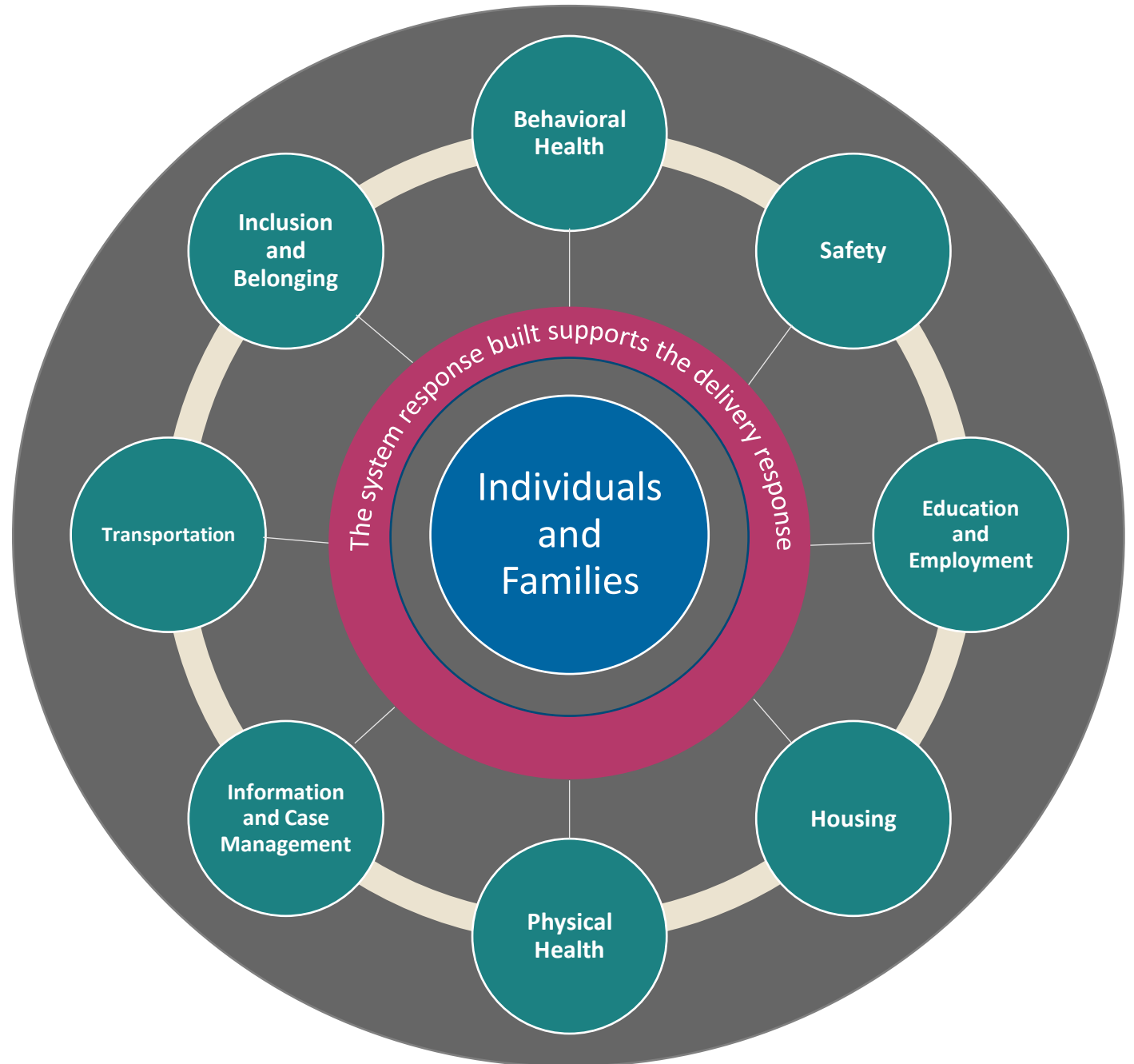
Inconsistent and misaligned outcomes and measures

Lack of coordination & funding to collaborate

**This initiative seeks to create a shared ownership process for outcomes across child-serving agencies to reduce risk, improve outcomes and efficiencies, while reducing or eliminating cost overruns.**



# MULTI-SECTORAL COLLECTIVE IMPACT MODEL





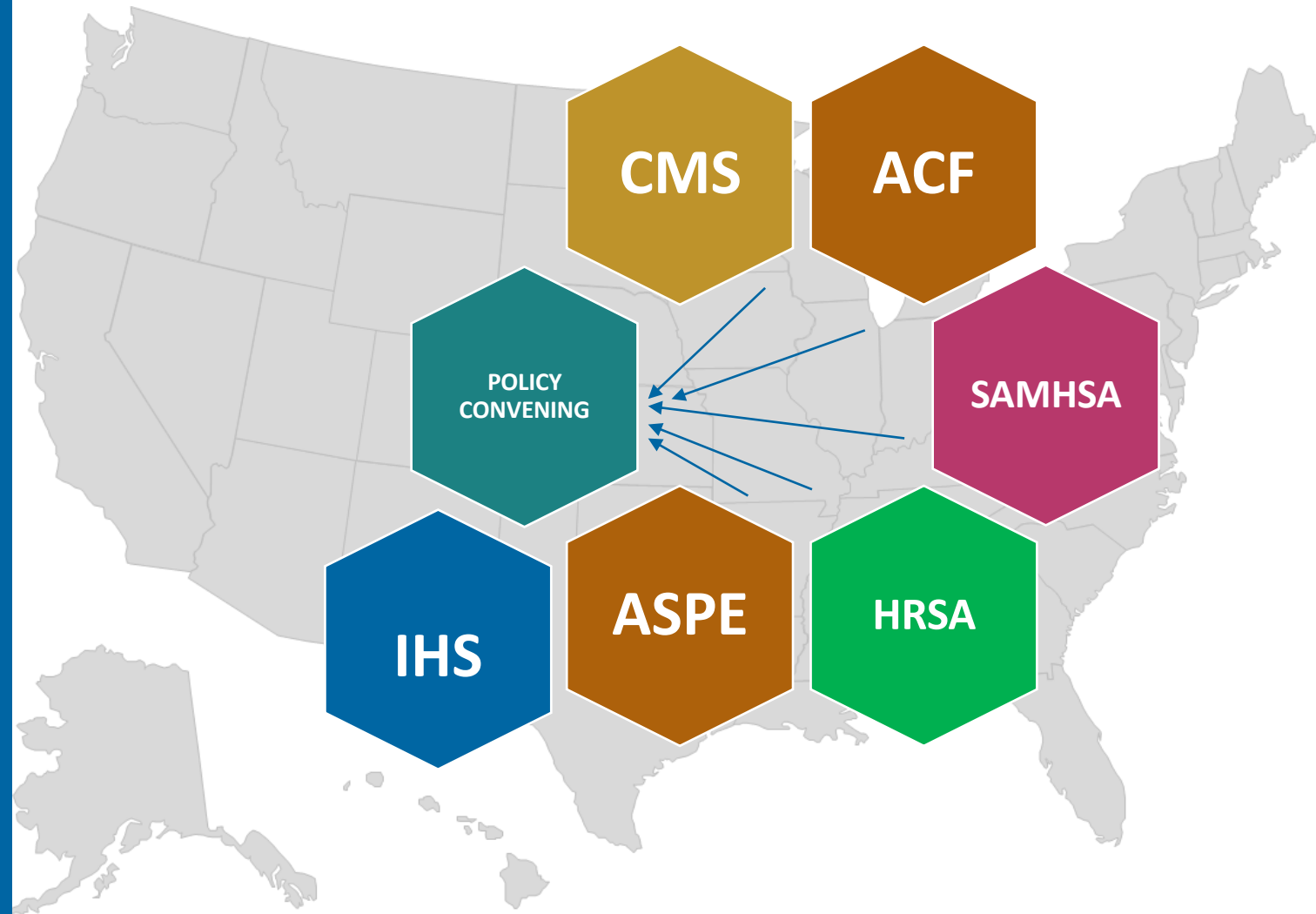
## An opportunity to better serve our children and youth by:

- **Creating shared ownership for outcomes – policy and practice alignment**
- **Reducing risk and improving efficiencies**
- **Reducing/eliminating cost overruns**
- **Collaborating across multiple systems**

**FEDERAL  
CONVENING: NOV  
2023**

**PROMOTING FAMILY  
WELL-BEING TO REDUCE  
INVOLVEMENT IN THE  
CHILD WELFARE SYSTEM**

## **POLICY DISCUSSION WITH ALL FEDERAL PARTNERS**



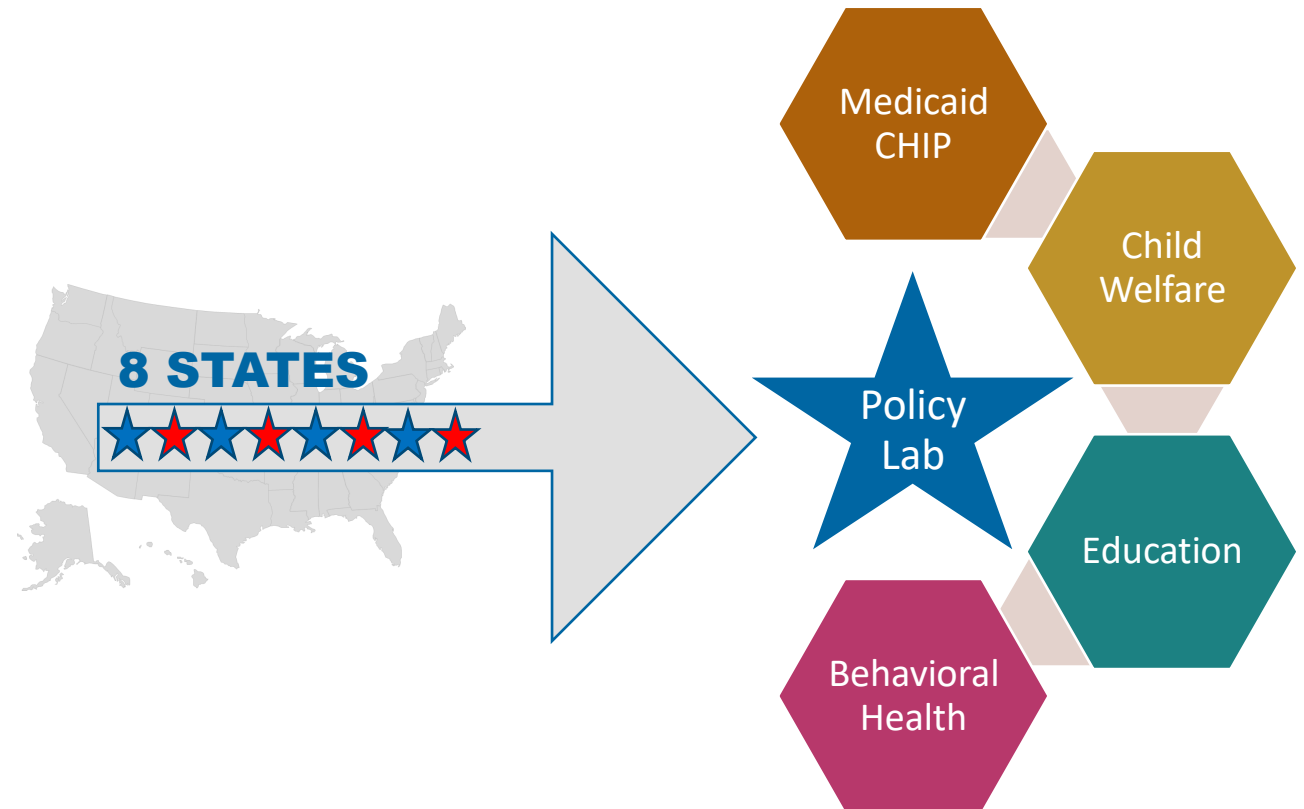


## STATE POLICY LAB CONVENING OPPORTUNITY:

CREATE A SHARED  
OWNERSHIP PROCESS FOR  
OUTCOMES ACROSS CHILD-  
SERVING AGENCIES  
TO REDUCE  
RISK, IMPROVE OUTCOMES  
AND EFFICIENCIES,  
WHILE REDUCING OR  
ELIMINATING COST  
OVERRUNS.

**HMA and partners will host a multi-state, interagency, in-person policy lab with additional TA aimed at assisting child welfare, behavioral health, Medicaid and schools to:**

- **identify actionable approaches to improve outcomes for children, youth and families**
  - **promote program alignment and**
- **generate meaningful policy solutions.**






# BRIEF COLLECTION

[www.healthmanagement.com/insights](http://www.healthmanagement.com/insights)

- [State Policy and Practice Recommendations to Advance Improvements in Children’s Behavioral Health](#)
- [The Role of Specialized Managed Care in Addressing the Intersection of Child Welfare Reform and Behavioral Health Transformation](#)
- [Improving Outcomes for Children in Crisis with Evidence-Based Tools](#)
- [Early Childhood Mental Health: the Importance of Caregiver Support in Promoting Healthy Child Development and Clinical Interventions for Children](#)
- [Connecting Schools to the Larger Youth Behavioral Health System: Early Innovations from California](#)
- [Bolstering the Youth Behavioral Health System: Innovative State Policies to Address Access & Parity](#)
- [System Integration Across Child Welfare, Behavioral Health, and Medicaid](#)

A teal-colored starburst graphic with multiple points, containing white text. The text is arranged in three lines: 'Ready to', 'submit?', and 'Click here!'. The 'Click here!' text is underlined.

**Ready to  
submit?  
Click here!**

All applications will be reviewed by an external independent review panel using a standardized rubric that will cover the following domain areas:

- Gaps and opportunities analysis
- Intent of collaborative partnerships
- Approach to engagement of youth and adults with lived experience
- Imminent risks to children and youth and their families as well as to the public agency operations as a result of poor outcomes to clients served

**Deadline to submit application is no later than 5pm PST on December 20, 2023!**



# THE POLICY LAB: FAQs

HMA

- **How many states can participate?** *This opportunity is for 8 state child serving multi-agency teams to participate in the children's behavioral health policy lab.*
- **When are applications due?** *Applications are due on December 20th by 5:00pm PST.*
- **How will best practices be shared?** *A playbook will be developed to disseminate best practices.*
- **How can I keep up to date with Policy Lab progress and future webinars?** *You can choose to subscribe to HMA topics of interest here to stay up-to-date with this project, future webinars and new tools to help lead this work.*
- **Who do I contact if I have questions regarding my application?** *Questions regarding application submission and status should be sent to [cbhpolicylab@healthmanagement.com](mailto:cbhpolicylab@healthmanagement.com).*

---

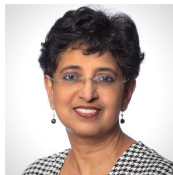
# HMA

---

## WHAT CAN WE DO FOR YOU?

Our depth and breadth of experience has helped an incredibly diverse range of Child Welfare, Medicaid and Children's Behavioral Health industry thought leaders.

## Questions?



**Uma Ahluwalia**  
Health Management Associates  
[uahluwalia@healthmangement.com](mailto:uahluwalia@healthmangement.com)



**Julie Collins**  
Child Welfare League of America  
[Jcollins@cwla.org](mailto:Jcollins@cwla.org)



**David Miller**  
National Association of State Mental Health Program Directors  
[David.Miller@nasmhpd.org](mailto:David.Miller@nasmhpd.org)



**Sheila Poole**  
American Public Human Services Association  
[spoole@aphsa.org](mailto:spoole@aphsa.org)



**Joe Ribsam**  
Annie E. Casey Foundation  
[jribsam@aecf.org](mailto:jribsam@aecf.org)



**Caitlin Thomas Henkel**  
Health Management Associates  
[cthomashenkel@healthmanagement.com](mailto:cthomashenkel@healthmanagement.com)