

**HMA**

**Understanding  
the SUD  
Ecosystem: Solution  
Focused Opportunities  
for Change**

**April 2024**



[WWW.HEALTHMANAGEMENT.COM](http://WWW.HEALTHMANAGEMENT.COM)

# SERIES PANELISTS & MODERATOR



**Anika Alvanzo**  
*Principal*  
Baltimore, MD



**Lisa Braude**  
*Principal*  
Boston, MA



**Teresa Garate**  
*Principal*  
Chicago, IL



**Erin Russell**  
*Principal*  
Baltimore, MD



**Linda Vail**  
*Principal*  
Lansing, MI



**Debbi Witham**  
*Principal*  
Washington,  
DC

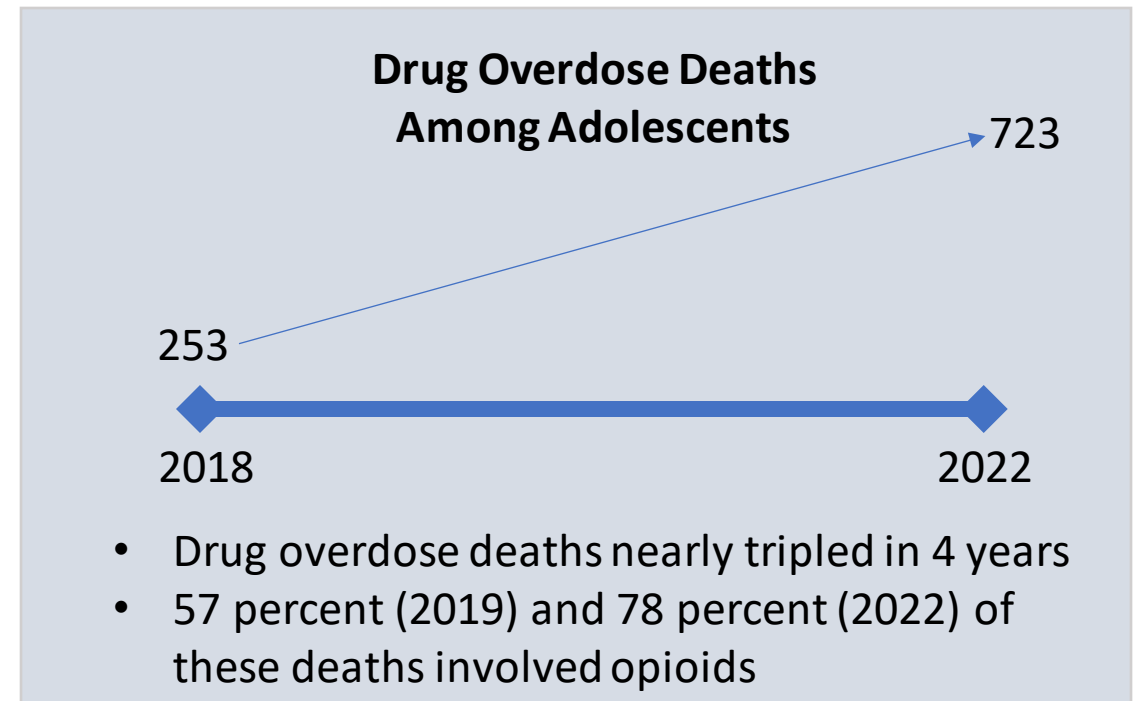
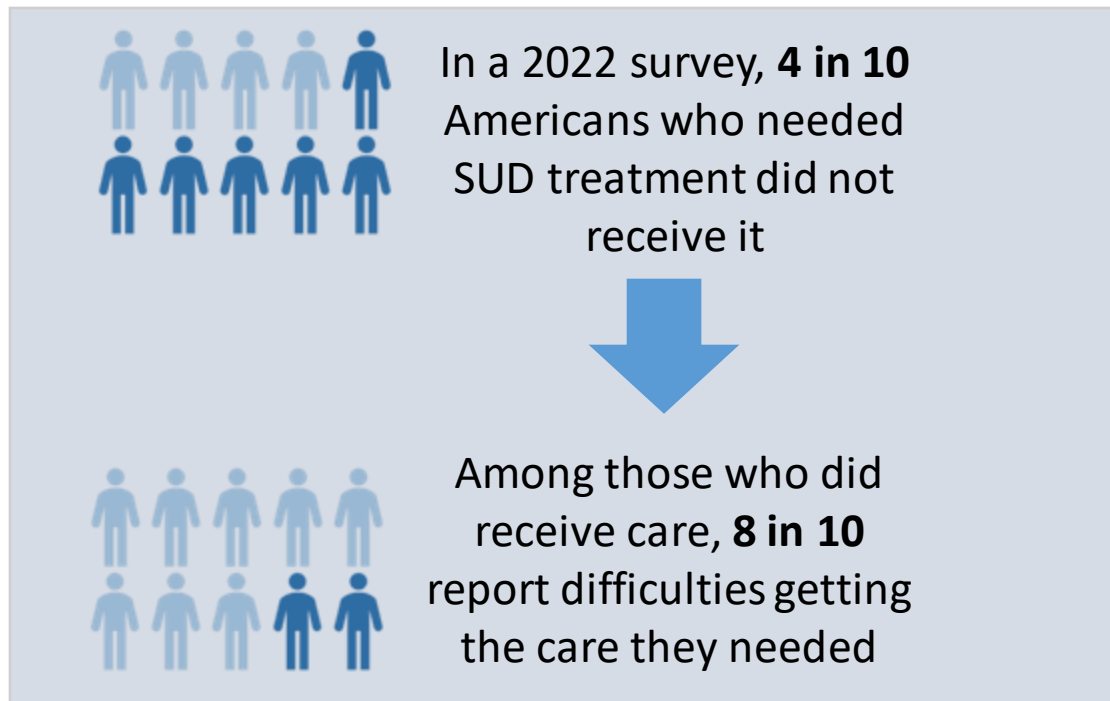
## SERIES OVERVIEW

- A series of **provocative conversations** based on the latest evidenced based research and innovation with leaders in the field of SUD and OUD
- An opportunity to **spark solution focused approaches** to the continuing public health epidemic that continues to take lives every day
- A high-level overview of the many facets that make up the **SUD Ecosystem** that go beyond assessment, treatment and supports to include prevention and health promotion
- An understanding of the need to **be community centric and equity focused**



# WHY WE ARE HERE—PEOPLE ARE CONTINUING TO DIE

The SUD crisis is not improving...		
2020	2021	2022
40.3 million (14.5%) Americans ages 12 and older were diagnosed with a substance use disorder in the past year.	43.7 million (15.6%) Americans ages 12 and older were diagnosed with a substance use disorder in the past year	48.7 million (17.3%) Americans ages 12 and older were diagnosed with a substance use disorder in the past year



# LEVERS TO DRIVE CHANGE TO MORE EFFECTIVE APPROACHES

**POLICY & STATE  
LEGISLATION**  
State, Federal, County



**ATTITUDES  
& STIGMA**



**FUNDING**

Grant resources, opioid abatement resources, Medicaid/Medicare, commercial insurance

**LICENSING /  
ACCREDITATION**



# GUIDING PRINCIPLES: PIVOTING TO SAVE LIVES

## Act Differently

We have an **imperative to think & act** differently.

## Empower Change

**Empower change through equity grounded, person centered and community driven approaches** that respond to what individuals want and need.



## Be Accountable

See each interaction as life and death- **Be accountable** to the care for each individual and ensure there are **no wrong doors** by embracing navigation and continuity of care.

## Build System Thinking

**Building system thinking** for a comprehensive and interconnected spectrum of engagement and treatment strategies.

# Empower change through equity grounded, person centered and community driven approaches that respond to what individuals want and need.

## Equity Grounded



- Everyone has a fair and just opportunity to be healthier
- Acknowledges why disparities and obstacles exist in order to address them and their consequences
- Engages policy to address structural drivers of inequity
- Incorporates community voice and storytelling

## Person-Centered



- Considers unique needs of each individual
- Individualizes care while recognizing best practices/successful approaches
- Addresses the broad spectrum of needs for overall health and well-being comprehensive

## Community-Driven



- Community centered- solutions should be grounded in the unique features and resources of each community
- Led by community
- Stakeholders will use their levers differently
- Stakeholders may need to expand their services.

## NEXT WEBINAR

**Building systems-thinking**  
through a comprehensive  
and interconnected spectrum  
of engagement and treatment  
strategies.

**Wednesday May 1<sup>st</sup>**  
**at 12 PM ET**



**Scan here to register**