

HMA

**Understanding
the SUD
Ecosystem: Solution
Focused Opportunities
for Change**

May 1, 2024



WWW.HEALTHMANAGEMENT.COM

SERIES PANELISTS & MODERATOR



Anika Alvanzo
Principal
Baltimore, MD



Lisa Braude
Principal
Boston, MA



Teresa Garate
Principal
Chicago, IL



Erin Russell
Principal
Baltimore, MD



Linda Vail
Principal
Lansing, MI



Debbi Witham
Principal
Washington,
DC

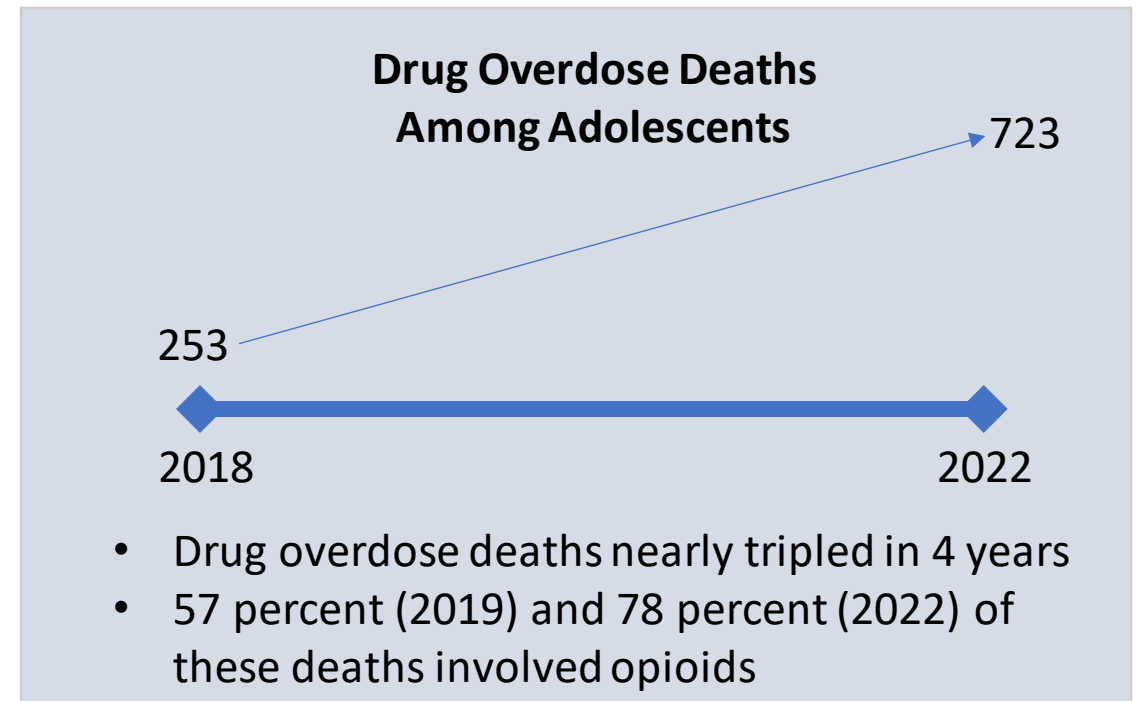
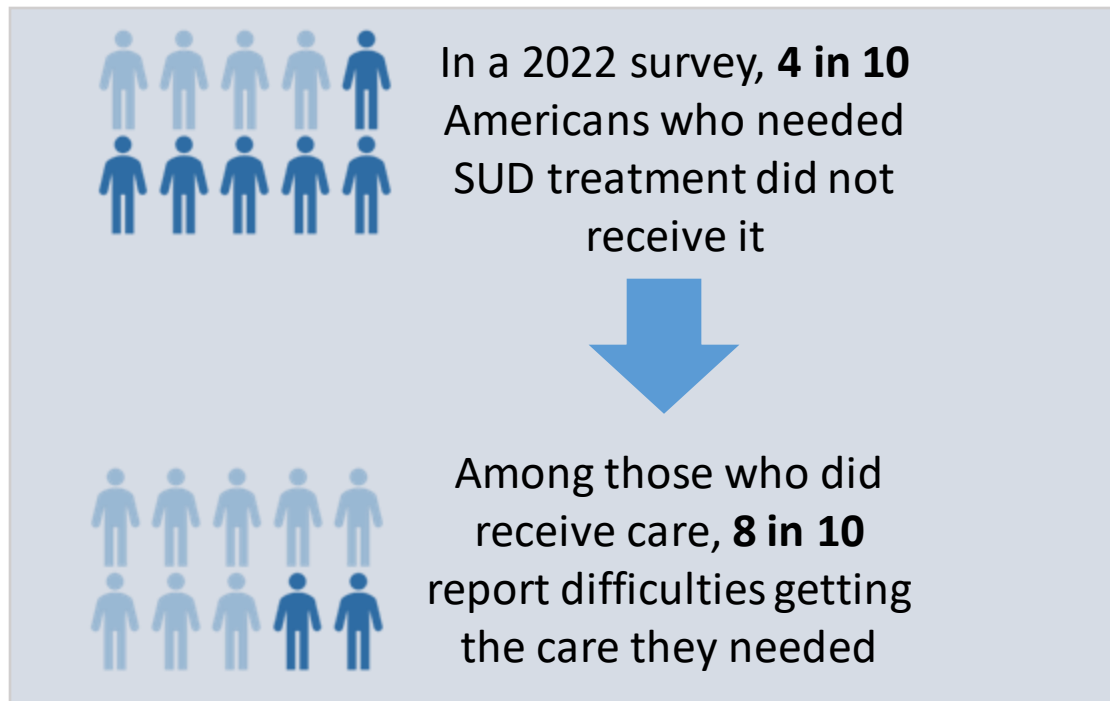
SERIES OVERVIEW

- A series of **provocative conversations** based on the latest evidenced based research and innovation with leaders in the field of SUD and OUD
- An opportunity to **spark solution focused approaches** to the continuing public health epidemic that continues to take lives every day
- A high-level overview of the many facets that make up the **SUD Ecosystem** that go beyond assessment, treatment and supports to include prevention and health promotion
- An understanding of the need to **be community centric and equity focused**



WHY WE ARE HERE—PEOPLE ARE CONTINUING TO DIE

The SUD crisis is not improving...		
2020	2021	2022
40.3 million (14.5%) Americans ages 12 and older were diagnosed with a substance use disorder in the past year.	43.7 million (15.6%) Americans ages 12 and older were diagnosed with a substance use disorder in the past year	48.7 million (17.3%) Americans ages 12 and older were diagnosed with a substance use disorder in the past year



LEVERS TO DRIVE CHANGE TO MORE EFFECTIVE APPROACHES

**POLICY & STATE
LEGISLATION**
State, Federal, County



**ATTITUDES
& STIGMA**



FUNDING

Grant resources, opioid abatement resources, Medicaid/Medicare, commercial insurance

**LICENSING /
ACCREDITATION**



GUIDING PRINCIPLES: PIVOTING TO SAVE LIVES

Act Differently

We have an **imperative to think & act** differently.

Empower Change

Empower change through equity grounded, person centered and community driven approaches that respond to what individuals want and need.



Be Accountable

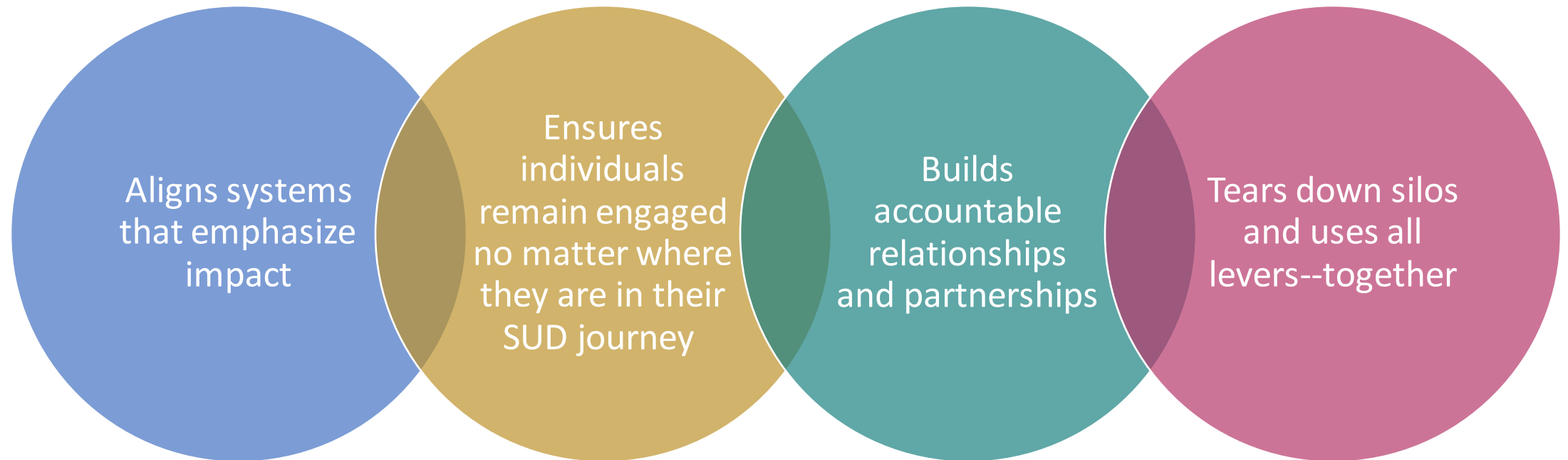
See each interaction as life and death- **Be accountable** to the care for each individual and ensure there are **no wrong doors** by embracing navigation and continuity of care.

Build Systems Thinking

Building systems thinking for a comprehensive and interconnected spectrum of engagement and treatment strategies.

BUILD SYSTEMS THINKING APPROACH

A COMPREHENSIVE AND INTERCONNECTED SPECTRUM OF ENGAGEMENT AND TREATMENT STRATEGIES:



OTHER WEBINARS IN THIS SERIES

1

Part One:

[Solution Focused
Opportunities for Change](#)

2

Part Two:

[Empowering Change in the
SUD Ecosystem](#)